



B R O M M E

ASSEMBLY INSTRUCTIONS

Version 1.5



OPEN SHELVING

TOOLS REQUIRED

Wrench 7/16"



Ratchet 7/16"

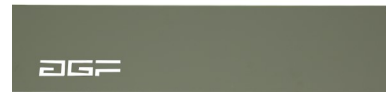


Components

Posts



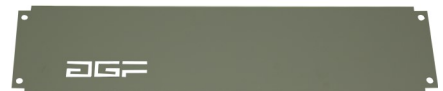
Side Brace



Shelf Clip



Back Brace



Hardware



Boxed Shelf

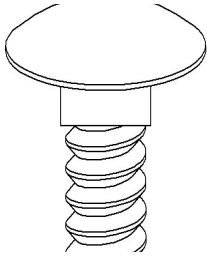


Shelf

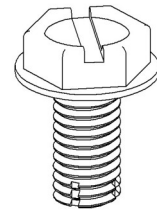


Components

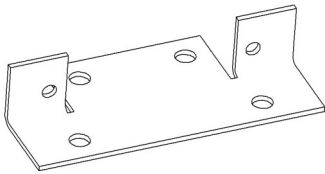
Carr Bolt 1/4 x x!/2



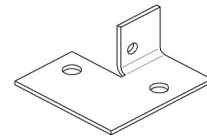
Self Tapping Bolt 10-32 x 3/8



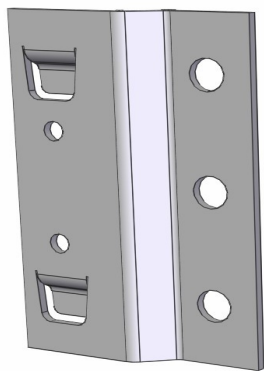
Double Floor Plate



Floor Plate



Back Clips



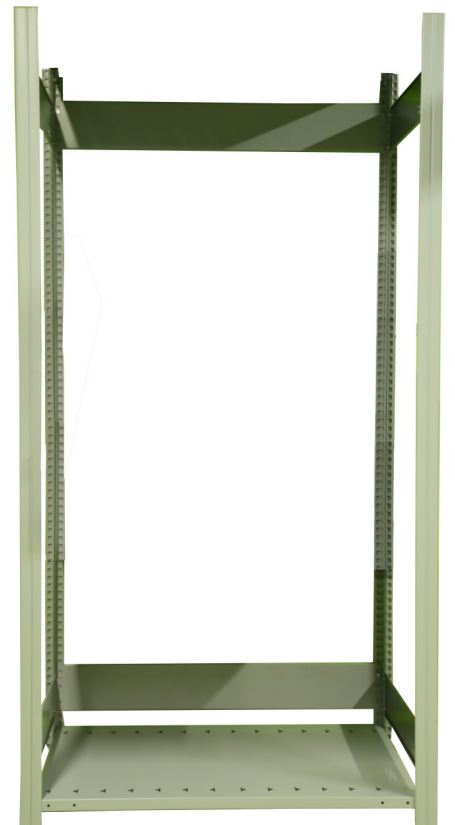
Installation of Side Braces

1. Take 2 posts or 2 closed uprights and a pair of side braces
2. Install a side brace at the bottom and the other at the top
3. Using 1/4 " Carriage Bolt x 1/2" long with 1/4" Flange Nut (4 per brace)
4. Repeat step 2 and 3 using the posts of the opposite side



Installation of Back Braces

1. Take the 2 posts that are attached with side braces
2. Install one back brace at the bottom
3. Clip Brace on to posts and then use self tapping with 10-32 Hex Bolt to secure in place.
4. Once stable install the upper back brace





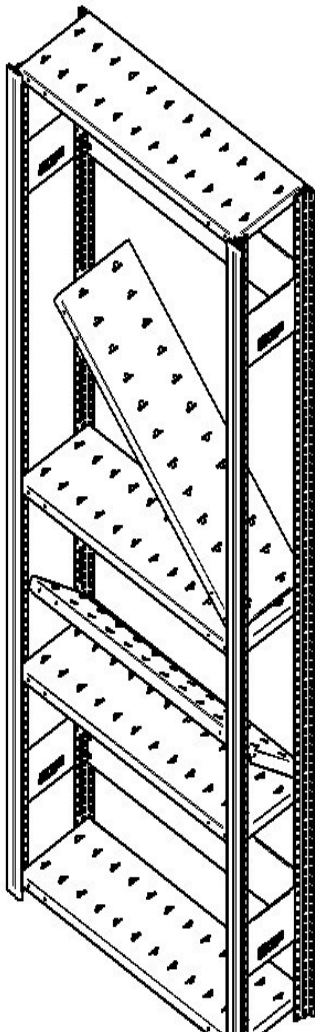
B R O M E

Installation of shelves

1. Insert the 4 shelf clips at the bottom
2. Install the first shelf at the bottom
3. Repeat step 1 to add more shelves

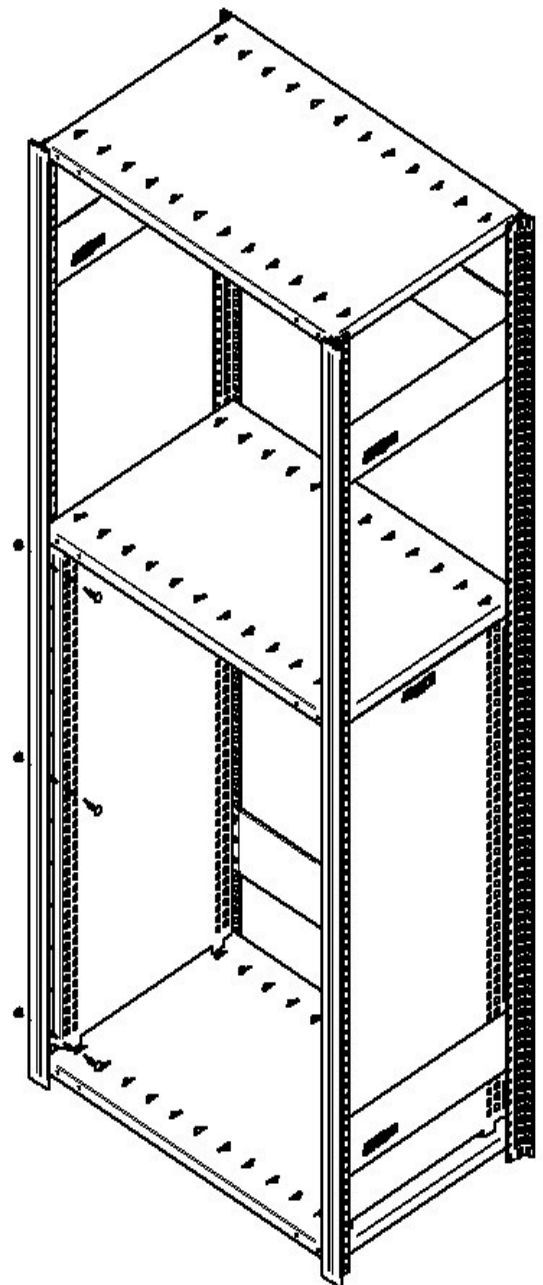


Installation of shelves



Shelves are to be clipped into Posts.

Place shelves on an angle then they fit and clip into posts

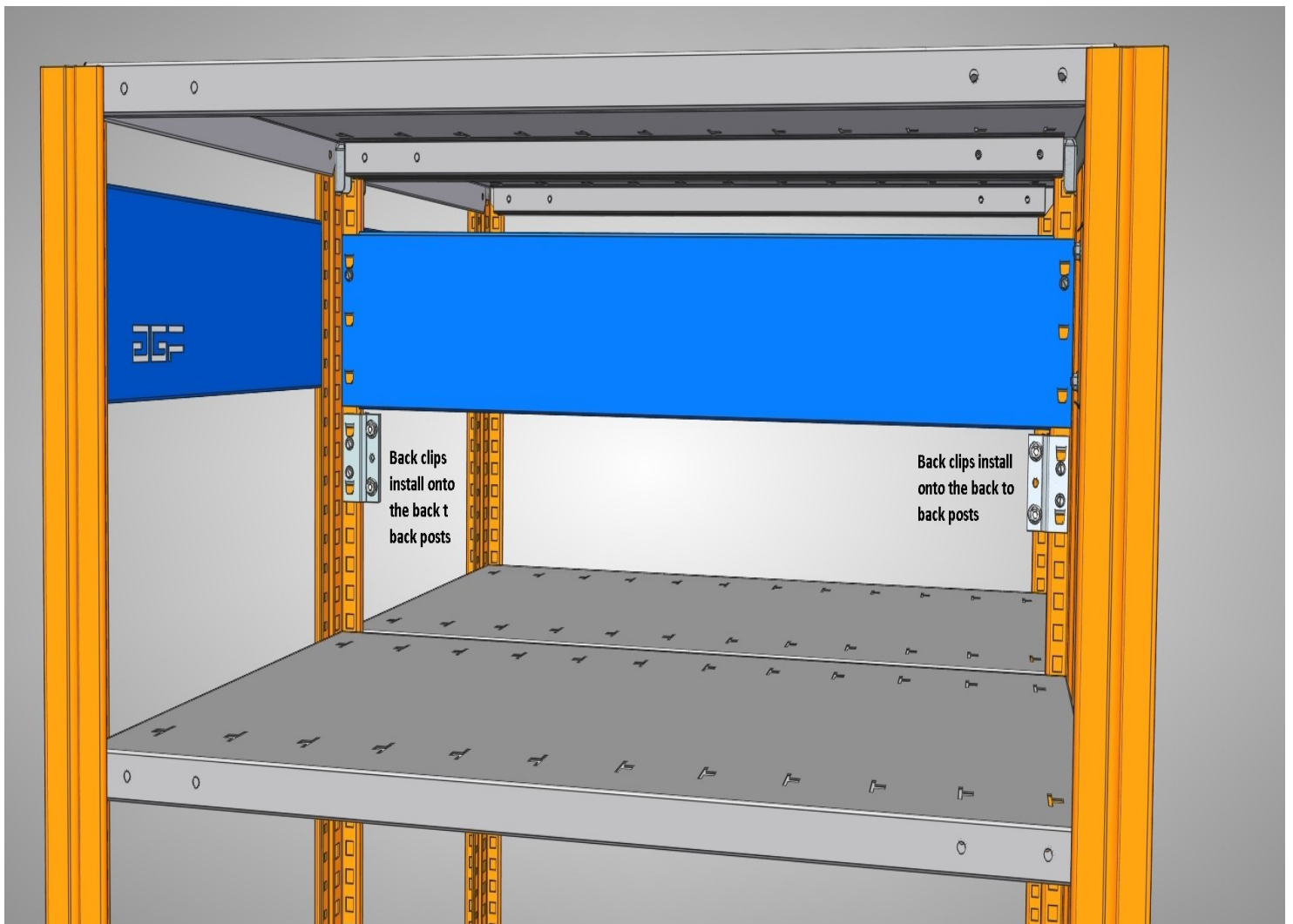




B R O M E

Should there be a requirement to install shelving units Back to Back .

Install the Back clips as shown to both the upper area of unit and also the lower section of unit.



Installation of back clips

Bend locking tab inwards





B R O M E

If Floor Plates option has been chosen to be installed , install prior to installing braces etc .

Use 1/4" x 1/2" Carriage Bolt and Flange Nut

