



B R O M M E

ASSEMBLY INSTRUCTIONS

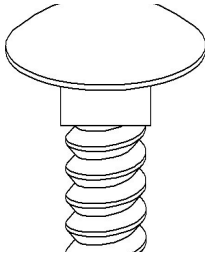
Version 2.5



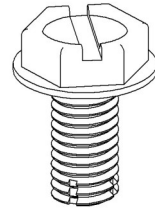
CLOSED SHELVING

Components

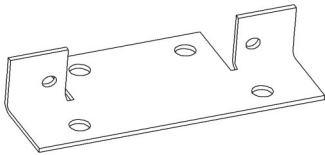
CarrBolt 1/4 x x! /2



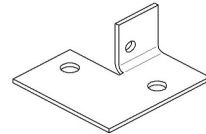
Self Tapping Bolt 10-32 x 3/8



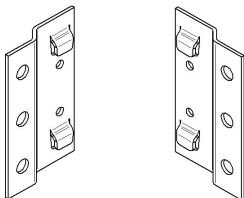
Double Floor Plate



Floor Plate

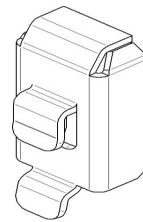


Back clips



Galvanized Back Clips
Installation of Back Panels

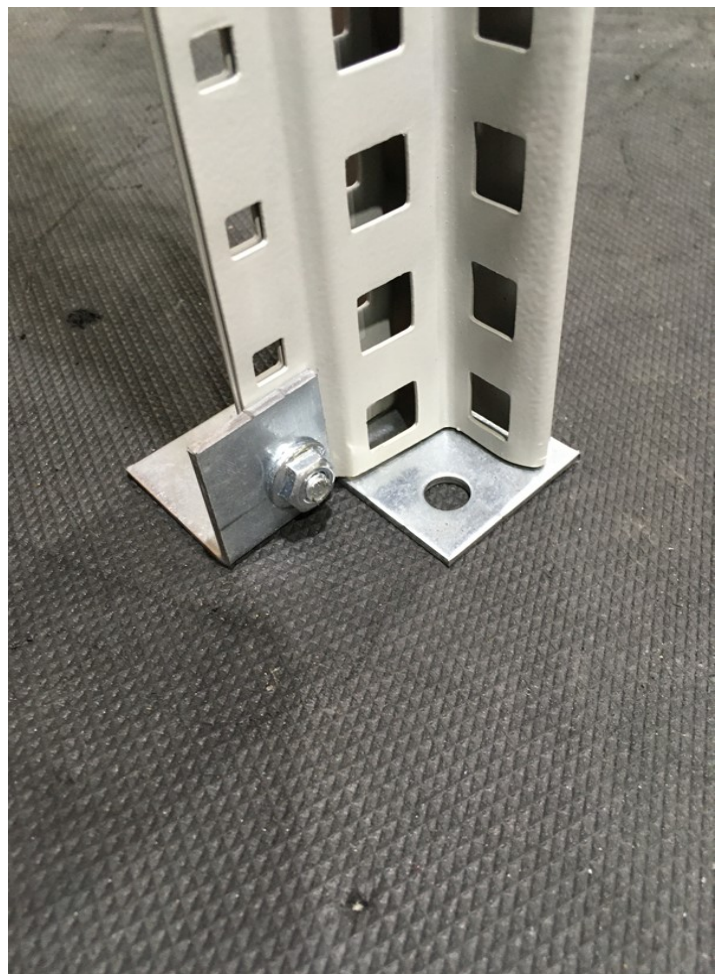
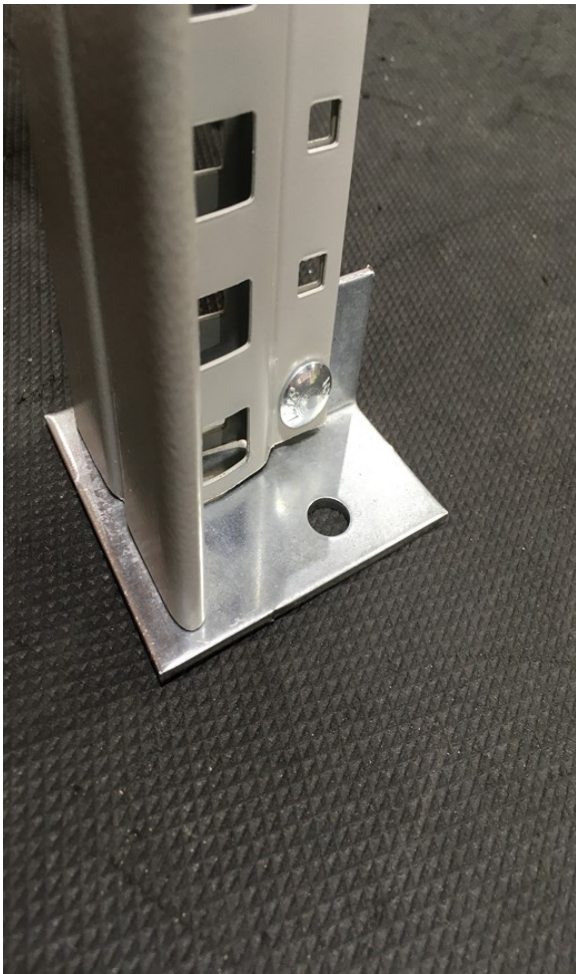
Shelf Clip



For assembly of shelving closed sides and backs .

- If floor anchor plates are to be installed , install prior to the following steps. Use 1/4 “ x 1/2” Carriage Bolt and Flange Nut (see following picture # 1 and #2)
- Using the closed uprights (side panels) , both bottom and top shelf should be assembled (using shelf clips) prior to back panels being assembled.
- Attach the back clips to each side. Afterwhich bend locking tab inwards (see picture) Back panel clips should be attached at the bottom above the shelf ; then in the middle (approx. 4’ above) and then at top . (Suggested)
- Back panels are to be mounted on the Backside of posts
- Attach the upper back panel to the upper back clip using 1/4” carriage bolt. (1 per bracket)
- Attach the bottom back panel overlapping the top back panel. Insert a 1/4 “ carriage bolt on each side, making sure that it has gone through both panels and clip .
- Once back panels have been assembled , additional shelves may be installed.

If Floor Plates option was chosen see below installation of Floor plates.





B R O M E

Side Panel



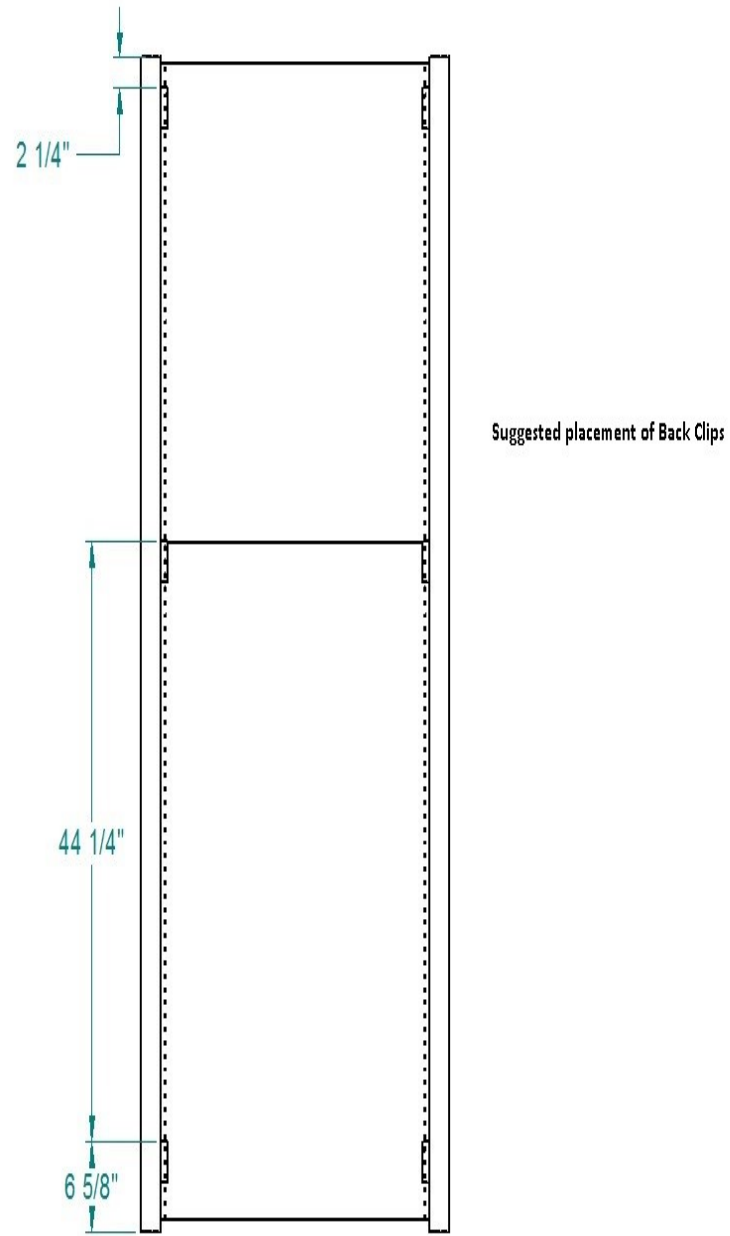
Installation of back clips





B R O M M E

Back Panel Installation—with suggested back panel clip installation for 99" high and lower panels .





B R O M E

Back Panel Installation



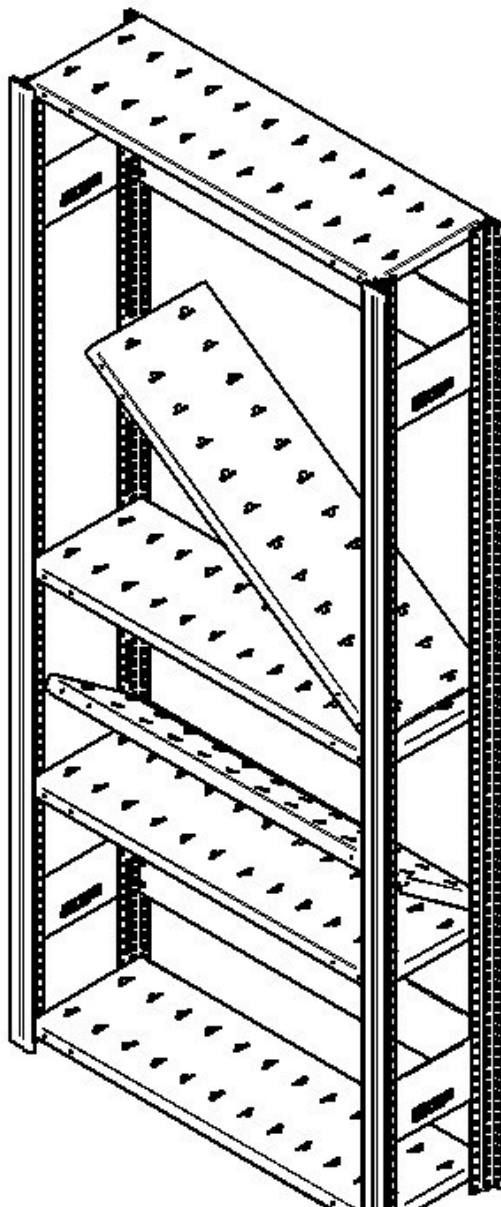


B R O M E

Finished closed unit—Prior to shelf installation



Installation of shelves -same principal as open shelving.



Shelves are to be clipped into Posts.

Place shelves on an angle then they fit and clip into posts